

# CERTIFICATE OF LOCATION OF GOVERNMENT CORNER

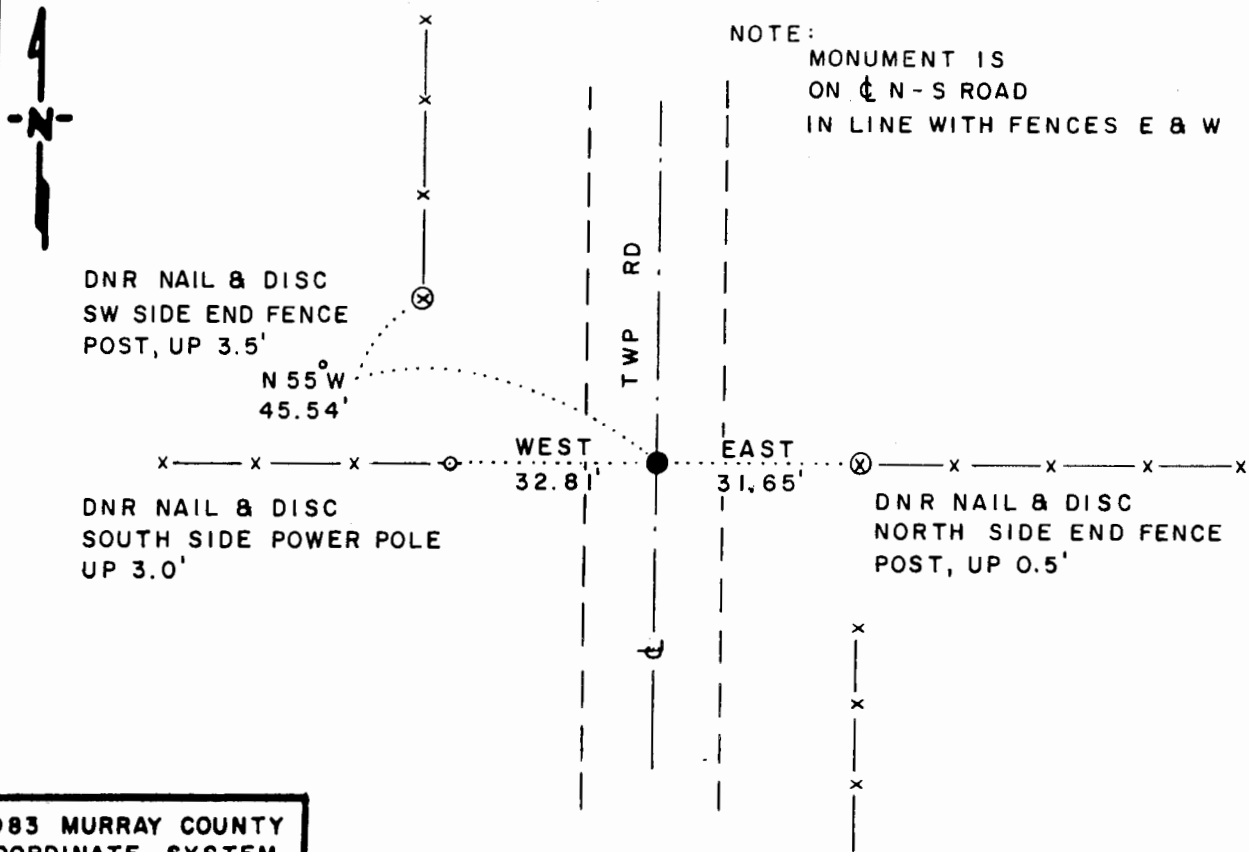
EAST QUARTER Corner of Section 11, Township 107 N, Range 40 W, 5<sup>th</sup> P.M.

STATE OF MINNESOTA, County of MURRAY

At the corner location shown on the sketch

- On 10-9-91 found a 6" x 8" x 8" GRANITE STONE, DOWN 1.5', OVER A CUT GRANITE<sup>DATE</sup> STONE (8" x 8" x 15"), DOWN 2.0'
  - left monument as found,  lowered monument,  removed monument (explain)
- On 10-9-91 placed a 3/4" x 18" REBAR WITH ALUMINUM CAP STAMPED DATE "DNR SURVEY MARKER", DOWN 0.4', OVER STONE

### SKETCH OF REFERENCE TIES



NOTE:  
MONUMENT IS  
ON  $\downarrow$  N-S ROAD  
IN LINE WITH FENCES E & W

1983 MURRAY COUNTY  
COORDINATE SYSTEM  
N = 187,244.636  
E = 543,069.316

BEARINGS OBSERVED WITH COMPASS

Statement of evidence relative to this corner location is on back of page

J.B.M. 11-25-91  
WMA 00065.00.00.01

I hereby certify that this document and the data contained herein was prepared by me or under my direct supervision.

Bruce W. Shpped 12-2-91  
Signature DATE

Registration No. 17003

- Land Surveyor,  Professional Engineer
- County Surveyor,  County Engineer

OFFICE OF THE COUNTY RECORDER  
County of MURRAY

I hereby certify that this document was filed in the Co. Recorder's office at \_\_\_\_\_ M. on the \_\_\_\_\_ day of \_\_\_\_\_ A.D., 19\_\_\_\_

County Recorder James V. Johnson

By DEC 4 1991, Deputy

DOCUMENT NO. \_\_\_\_\_

East Quarter Corner of Section 11, Township 107 North, Range 40 West

The DNR Bureau of Engineering contacted the following for survey information:

Minnesota Secretary of State's Office  
Murray County Recorder's Office  
Murray County Highway Engineer's Office

- 1861 U.S. General Land Office notes obtained from the Secretary of State's Office show the corner marked with pits and mound.
- 1991 October, DNR Bureau of Engineering hired a backhoe to dig for evidence of a monument at corner. Found a 6" by 8" by 8" granite stone down 1.5 feet over an 8" by 8" by 15" cut granite stone down 2.0 feet with a 5/8" by 1-3/4" by 24" iron bar on its east side. The stones were found to be:  
on the center line of a north-south road  
in line with fences east and west  
2646.71 feet from the northeast corner of Section 14  
2643.27 feet from a spike found in the area of the northeast corner of Section 11

Removed the 6" by 8" by 8" granite stone and deposited it next to the 8" by 8" by 15" cut granite stone.

Analysis of the above information led the DNR Bureau of Engineering to conclude that the found stones mark the location of the corner.